



WS624D

2-Way 5 ¼" in-wall/ceiling speaker

► Features

- High-quality in-wall/ceiling loudspeaker
- 5 ¼" 2-Way driver
- Fast-con™ connections
- 16 Ohm impedance
- Moisture proof cone treatment
- Aluminum front grill
- Wide 100° conical coverage
- Quick-fit installation system
- Paintable to blend-in

► Applications

- Hotels
- Restaurants & pubs
- Corporate offices
- Retail stores & warehouses
- Public buildings
- Airports & train stations
- ...

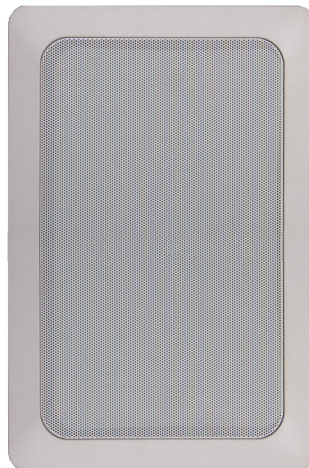
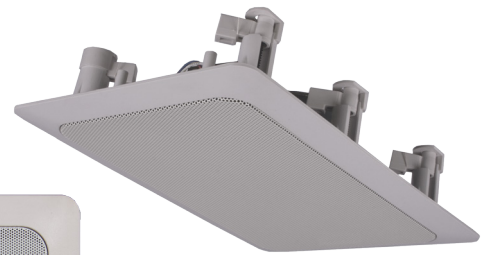
The WS series loudspeakers are high-quality in-wall/ceiling loudspeakers, delivering exceptional sound quality and value for a wide variation of applications, ranging from paging and announcements to background music systems in a wide range of business applications, including hotels, restaurants and pubs, corporate offices, retail stores, etc.

The WS624 in-wall/ceiling loudspeaker features a 5 ¼" driver with a 1" tweeter, having a continuous power handling of 30 Watt and a maximum power handling of 60 Watt. The 2-way construction makes the WS624 the perfect match for a wide variation highly demanding of applications, guaranteeing a high-quality and true-to-nature reproduction of music and speech.

The moisture proof treatment on the speakers' cone and aluminum front grill protects it for installation in humid or outdoor environments.

The 16 Ohms impedance allows connection of a large number of loudspeakers in a standard low impedance audio system (up to 4 speakers in parallel on a single 4 Ohm amplifier channel). Connections are made with Fast-con™, allowing fast and smooth connections. The mounting of the loudspeaker into the ceiling is achieved with a Quick-fix mechanism, offering a great installers convenience and lifetime stability.

The construction of the speakers' housing is made out of high-quality ABS, while the front is covered by a solid powder-coated aluminum grille. Custom painting is possible for a total blending into any environment.



► Specifications

SYSTEM SPECIFICATIONS	
Speaker type	2-Way
Max. power	60 W
RMS power	30 W
Impedance	16 Ohm <i>8 Ohm version also available (WS624)</i>
Sensitivity (1W/1m)	92 dB
Sound pressure (Max W/1m)	107 dB
Frequency response (± 3 dB)	60 Hz - 20 kHz
Frequency range (-10 dB)	50 Hz - 20 kHz
Cross-over type	Passive built-in
Horizontal dispersion	100°
Vertical dispersion	100°
PRODUCT FEATURES	
Dimensions (Diameter x Depth)	280 x 192 x 90 mm
Weight net	1.31 Kg
Connection	Fast-con™ connections
Drivers	5 ¼" MF/LF woofer 1" HF tweeter
Construction	High quality ABS housing
Grill type	Fine perforated aluminum grill
Cut-out measurement	245 x 155 mm
Built-in Depth	85 mm
Mounting & Handling	Quick-fit installation system (4-screw)
Available Colours	WS624/D White (NCS S1000-N) WS624D/W White (RAL9010)
SHIPPING & ORDERING	
Packaging	Carton box
Shipping Weight & Volume	1.56 Kg - 0,0088 Cbm
Accessories Included	Foam inlay Cut-out template
*AUDAC reserves the right to change specifications without notice: this is part of our policy to continually improve our products	